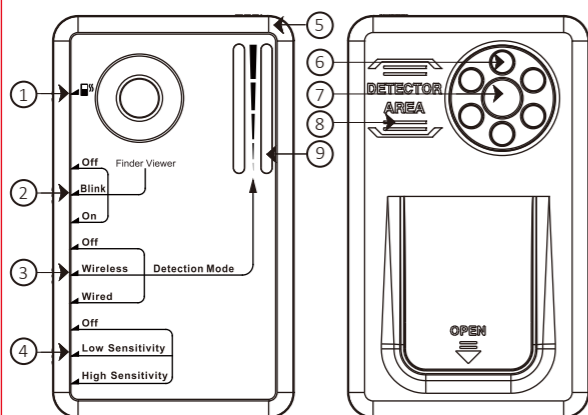


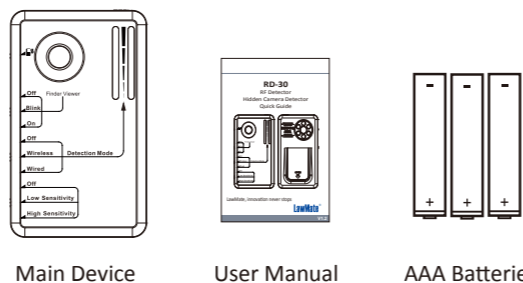
## 1. Names and Parts



1. Vibration Switch
2. Hidden Camera Scan Blink / On / Off
3. Detection Mode
4. Sensitivity Adjustment
5. Antenna
6. LED Lights
7. Hidden Camera View Finder
8. Sensor Area (Wired Scan)
9. Signal Strength Bar

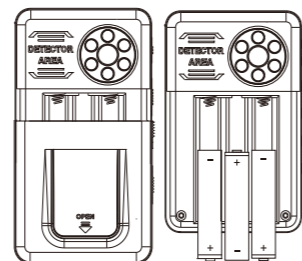
1

## 2. Package Content



Main Device      User Manual      AAA Batteries

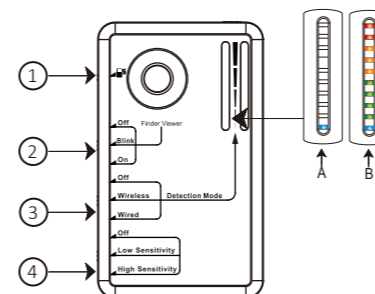
## 3. Power Supply



- 3.1 To open the back cover, slide it towards the bottom of the device.
- 3.2 Insert batteries as shown in the illustration.
- 3.3 Close the back cover by sliding it towards the top of the device.

2

## 4. Wireless Signal Scan



### 4.1 RF Signal Strength Meter in Wireless Detection Mode

- 4.1.1 Slide ③ to Wireless detection mode. The blue LED at the bottom of the left bar lights up as shown in illustration A. The device is on and stays at detection mode.
- 4.1.2 Select the preferred sensitivity ④. Ten colored light array shows the output power level of the target. (Illustration B)
- 4.1.3 When the device is low battery, the blue LED light goes off.

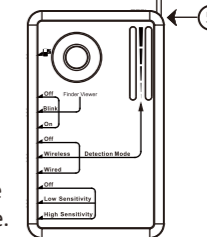
3

### 4.2 Silent Covert Pocket Vibration Mode

You can place this device in your pocket and when it detects eavesdropping, it will send a vibration alert so you know that it picks up an RF signal.

### 4.3 Directional Antenna

In Wireless Detection Mode, you can pull up the antenna ⑤ to help you to locate the spot of the hidden camera.



### 4.4 When ten colored LED still keeps lighting, it means the hidden camera is very close.

※ When the detection activity is proceeded at higher floor, there might be too much interference in the air.

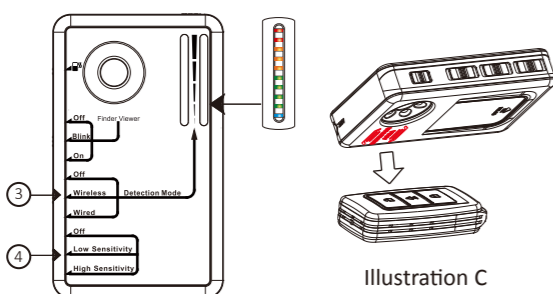
### 4.5 When the surrounding signal is too strong, it may disturb the real target finding. In this case, please adjust the sensitivity to LOW. (Wi-Fi is also an RF signal)

If the signal strength is still strong, try to turn on Finder Viewer and observe by viewing through the hole. See if you can find any reflection of a glass which should be the lens of a hidden camera.

4

## 5. Wired Camera and Device Scan

Not only can detect wireless camera, RD-30 can also scan wired camera and device. In the wired scanning mode, RD-30 acts more like a "metal detector," and is also used like a regular handheld metal detector. Like the one you see in an airport where the security personnel would hold in hand and try to place the detector close enough to scan any suspicious passenger. However, instead of detecting metal, RD-30 actually detects electromagnetic wave. Any appliance or device run by electricity will generate more or less of electromagnetic wave. RD-30 can pick up these waves to locate the position of wired camera or device.



5

### 5.1 Switch RD-30 to wired scanning mode by sliding ③ to Wired position. When switched to Wired Detection Mode, the vibration and Finder Viewer will be disabled automatically so that these two functions would not interference with Wired Detection Mode.

### 5.2 Place the Detector Area as close as possible to any suspicious spot to scan wired camera or audio bug (as shown in illustration C). Once it picks up any electromagnetic wave, you can see the Signal Colored Light Bar on the right side being lighted up.

### 5.3 You can adjust the sensitivity ④ to high or low depending on the environment where you would like to scan.

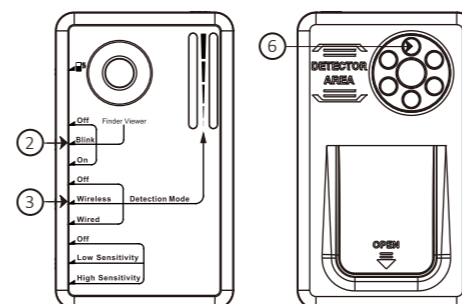
If the surrounding signal is too strong, adjust the sensitivity to LOW and move the sensor area closer to the suspicious spots.

※ If there is a central air conditioning system or air purifier nearby, it may influence the detection.

※ Please note you cannot turn off the sensitivity switch under Wired Detection Mode. When slide the switch to Off, it acts as same as Low

6

## 6. Finder Viewer Mode

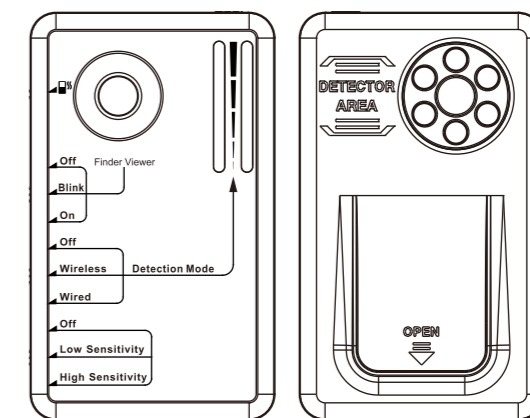


- 6.1 Switch ③ to Wireless Detection Mode, then switch ② to On or Blink.
- 6.2 Look through the view finder from the obverse side of the device.
- 6.3 A reflection of light can be seen when a hidden camera lens is found, as shown in the below illustration.



7

## RD-30 RF Detector Hidden Camera Detector Quick Guide



LawMate, innovation never stops

LawMate®

V1.2