

# HD 1080P Clear Eye Glasses WiFi IP Covert Hidden Camera

## Charging your camera

Using the included USB cable and a 1AMP or greater wall charger, please charge the camera for at least 2 hours. The LED on the camera will turn green when connected to power. The LED will turn off once the camera is fully charged.

## Inserting micro SD card

The camera requires the use of a Micro SD card up to 128GB. Before turning your camera on, please insert your Micro SD card into the camera. The micro sd card front of the card faces out when inserting into the micro sd card slot.

## Recording with your camera

To turn the camera on, press the power button. You will see the blue and red LED turn on simultaneously. Once you see the blue and red LED start to flash, you can connect to the camera's WiFi and use the phone app below. Once connected to WiFi, add the device and press the play button icon to see a live view. Once the live view appears, press the video record button to start recording. To display the recording time, simply tap the live view screen to display the time counter.

To disable the blinking LED lights on the camera, press the light bulb on the app as shown below.  
**Note:** You must record the first file for the time increment that is in the camera settings.

## Troubleshooting

### Device will not charge or display green LED

Connect the power cable and press the RESET button with the small pin then disconnect the charger and re-connect it.

### WiFi not showing up or forgot WiFi password?

Press and hold the reset button for 10 seconds.

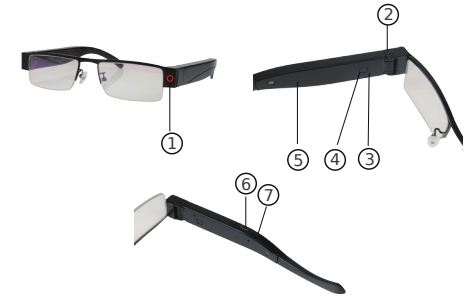
### Live view is stuttering/lagging?

If connected to the camera's WiFi, make sure you are close enough to the camera. The WiFi range when using P2P mode is around 40ft.

### Video will not playback with audio

Please use VLC Media Player for playback.

Product structure:



- ① Camera
- ② Micro SD card slot
- ③ Indicator light
- ④ On/Off button
- ⑤ Microphone
- ⑥ USB port
- ⑦ Reset Button

3

## Getting started

Step 1: Download and install the phone APP

Search for and download the app called "HDSmartIPC" in your App store.

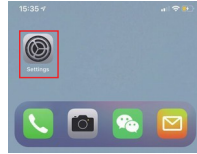


HDSmartIPC

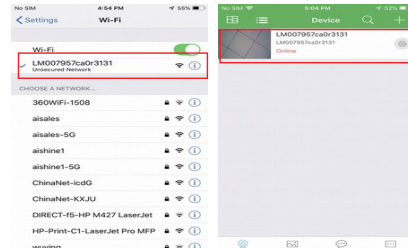
Step 2: Turn the camera on and wait for about 1 minute for the WiFi to be enabled.

Step 3: Connect to the cameras WiFi

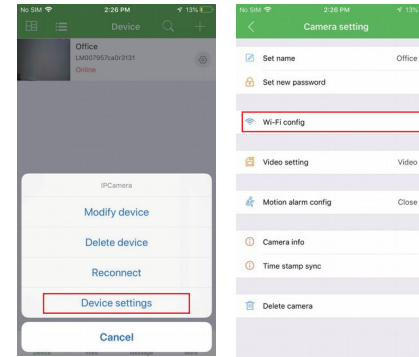
1. Open smartphone settings, search and connect to the camera's wireless signal named "AI/LM.....", wait Wi-Fi connected, and phone status bar appear Wi-Fi symbol.



2. Enter APP, app will add just connected camera automatically, Camera Online then;



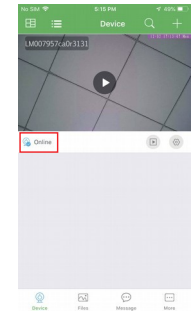
3. Press the gear icon after the camera and select Device settings, select Wi-Fi Config.



4. Select the router Wi-Fi and input the password, the camera will then connect to the router, enabling you to view the live feed while outside of your home network.

5. Close the APP and the camera will restart automatically and will come back online in 30 seconds.

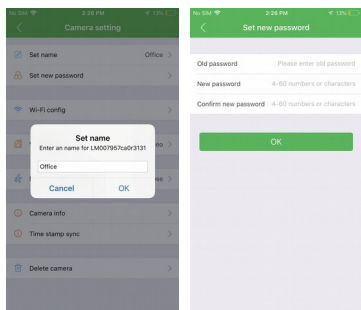
6. Open the APP to view live video locally or remotely.



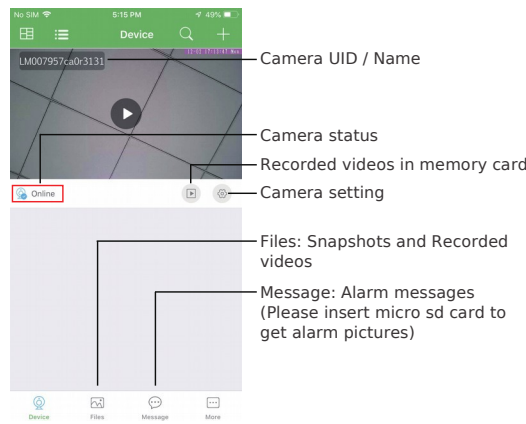
## Set camera name and private code

Set name: Press the gear icon after the camera and select Device settings, select Set name, insert name like Office, Room.....

Set new password: Press the gear icon after the camera and select Device settings, select Set new password and change it to new one. Default one is 8888.



## APP introduction:



## Live video page - Click camera to check

